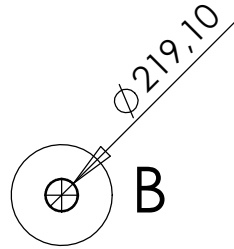
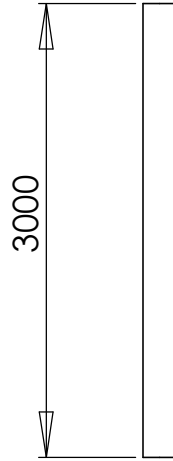


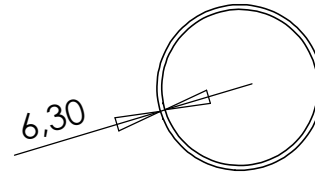
Mast for WS T1600

Palo per WS T1600

Poste per WS T1600



DETAIL B  
SCALE 1 : 10



UNLESS OTHERWISE SPECIFIED:  
DIMENSIONS ARE IN MILLIMETERS  
SURFACE FINISH:  
TOLERANCES:  
LINEAR:  
ANGULAR:

FINISH:  
Hot dip galvanized

DEBUR AND  
BREAK SHARP  
EDGES

DO NOT SCALE DRAWING

REVISION 28-07-2009

	NAME	SIGNATURE	DATE		
DRAWN					
CHK'D					
APPV'D					
MFG					
Q.A				MATERIAL:	
				S235	

Designed by:  
WS Energia Lda, Ed. Tech. II,  
Pav 46, Porto Salvo, T/F: 00351 214212190  
URL: [www.ws-energia.com](http://www.ws-energia.com)

Title **WS T1600 - mast**

A4

WEIGHT:

SCALE:1:50

SHEET 1 OF 1